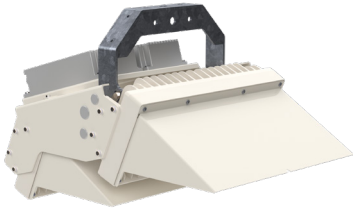




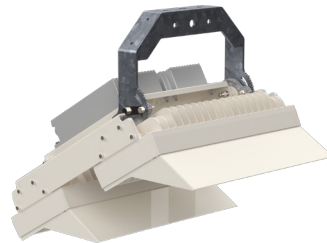
FL820-2 OB 600W

TECHNICAL DATASHEET

FL820 LED Floodlighting System with Integral or remote drivers provides an innovative solution for area lighting. The FL820 is a high output LED floodlight, which is designed for all types of area lighting, and may be used as a replacement for existing 1kW or 2kW floodlight systems. It is available as a single, twin or triple module with CSP (Chip Scale Package) LEDs.



FL820-2 FCO



FL820-2 L24



FL820-2 Projector

SPECIFICATION

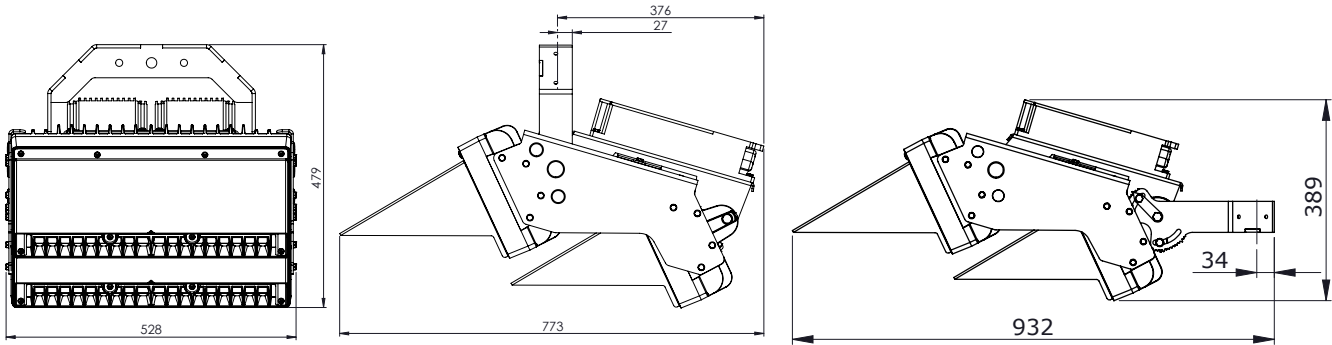
Light Source	CSP chip scale package LED		
Number of LEDs	256 per module (2 x 128) 512 LEDs total		
Correlated Colour Temperature	3000K, 4000K, 5700K		
Colour Rendering Index	>70		
Optical Cover	Flat glass		
Electrical Class	I		
Lumen Maintenance output	L90 @ 80,000 hours, Ta = 45°C L92 @ 100,000 hours, Ta = 25°C		
Driver Current	500mA - 1600mA		
Operating Temperature	-40°C to +50°C*		
Storage Temperature	-40°C to +85°C		
Installation Height	10 - 60m		
Material	Marine Grade Aluminium (LM6) Module, Aluminium cowl, Galvanised steel stirrup		
Finish	Aluminium parts polyester powder coated RAL 9010		
Ingress Protection	IP66		
Luminaire Tilt (on site)	-15° to +15°		
Product Configuration	FL820-2-FCO	FL820-2-L24	FL820-2-Projector
Max. Luminaire Luminous Flux	154,840lm	158,620lm	172,240lm
Power Consumption	362-1172W	362-1172W	362-1172W
Wind Area Side (FPA)	0.17m ²	0.13m ²	0.12m ²
Wind Area Front (FPA)	0.20m ²	0.22m ²	0.29m ²
Weight	32.0kg	30.2kg	28.6kg
Efficiency at full power (4000K)	132lm/W	135lm/W	147lm/W
Maximum efficiency (4000K)	160lm/W	164lm/W	178lm/W
Approvals	IEC 60598-2-5 CE and UKCA		

* The available output power of this luminaire is temperature dependent. Contact us for detailed performance specifications.

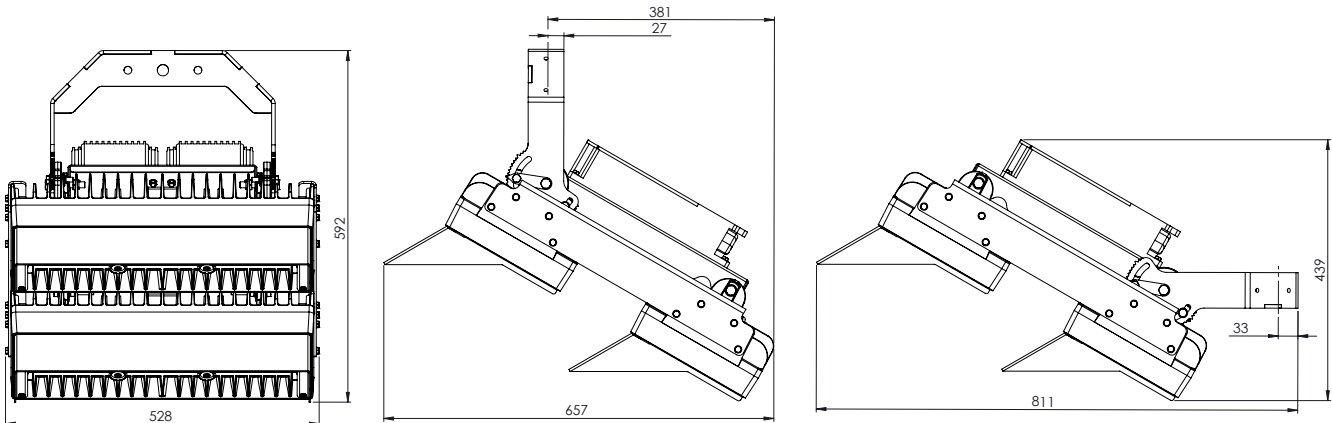
Input details			FL820-2 per MCB					
Input AC Voltage	Frequency range	Inrush current	B10	B16	B25	C10	C16	C25
220V	50 - 60Hz	8.75A for 4.32mS	1	1	2	1	1	3
277V	50 - 60Hz	11.0A for 2.00mS	1	2	3	1	2	3
400V	50 - 60Hz	14.8A for 2.24mS	1	1	2	1	2	3
480V	50 - 60Hz	16.0A for 2.64mS	1	1	3	1	2	3

VARIANTS

FL820-2-F
(DOUBLE MODULE FULL CUT OFF)



FL820-2-L24
(DOUBLE MODULE - L24 30° COWL)



FL820-2-P
(DOUBLE MODULE PROJECTOR)

