

DESIGNING & MANUFACTURING IN THE UK SINCE 1923



P873

Next Generation
LED Luminaire



This luminaire complies with ETL guidelines for White Light Emitting Diode Lighting Units and is eligible for the Enhanced Capital Allowance (ECA) scheme.



01920 860600
www.cuphosco.co.uk
enquiries@cuphosco.co.uk



INTRO

P873 Post Top LED Luminaire, has been designed for amenity lighting, pedestrian crossings, splitter islands at roundabouts and smaller car parks.

P873 combines the latest LED light source with state-of-the-art design, achieving longevity for both LEDs and the drivers. The installation is simple and fast.



LUMINAIRE LUMINOUS FLUX	up to 8,000 lm
LUMINAIRE EFFICACY	up to 127 lm/W
LUMEN MAINTENANCE	L90 > 100,000 hrs (1000mA, Ta = 25°C)
PHOTOMETRIC OPTIONS	4 distributions

KEY BENEFITS

- Elegant and state-of-the-art design
- Superior luminaire efficacy up to 127 lm/W
- Wide range of lumen packages
- Advanced thermal management
- Maximised savings on energy
- Minimal total cost of ownership
- Up to G4 glare rating. Dark sky friendly and no upward light
- Flexible and intelligent lighting control options
- Low windage and lightweight
- IP66 ingress protection
- 100% recyclable

EXCEPTIONAL OPTICAL PERFORMANCE

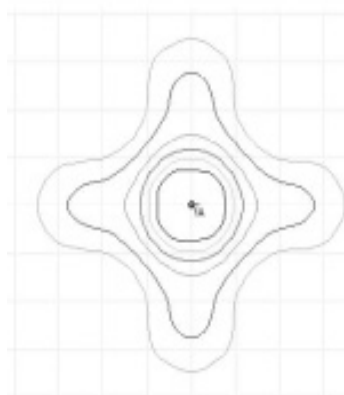
Standard Neutral White LEDs (CCT = 4000K)
Optional Warm White LEDs (CCT = 3000K)
Colour Rendering Index > 70
Improved mesopic vision
High quality PMMA lenses
Dark sky-friendly (zero upward light)
Minimal glare (up to G4)



OPTICAL DISTRIBUTIONS

P873 offers four distributions:

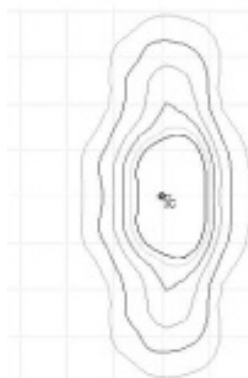
A1



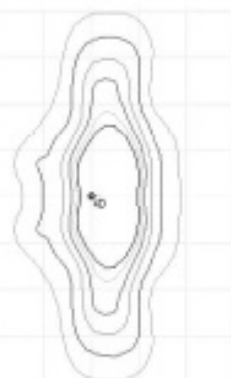
A2



A3



A4



P873 SPECIFICATION

Light source
 Number of LEDs
 Power Consumption
 Luminaire Luminous Flux
 Luminaire Efficacy
 Driver Current (in 50mA steps)
 Lumen Maintenance Output (Ta = 25°C)
 Operating Temperature (for 100,000 hrs)
 Weight (Total)

High Power LEDs
 16
 12 ~ 70W
 1,400 ~ 8,000 lm
 up to 127 lm/W
 200mA ~ 1500mA in 50mA steps
 L90 > 100,000 hours (1000mA, Ta = 25°C)
 -30°C to +40°C (1000mA)
 3.6kg

Correlated Colour Temperature
 Glare Rating
 Colour Rendering Index
 Optical Cover
 Electrical Class
 Control System Input

Neutral White 4000K (3000K optional)
 up to G4
 > 70
 PMMA
 I or II
 DALI / 1-10V

Surge Protection
 Dimming Control
 Lighting Regulation

8 kV Comm. Mode 6 kV Diff. Mode to IEC 61000-4-5; 10 kV Single Pulse
 Multi-step dimming
 Mini Photocell • NEMA Socket • Wireless CMS options

Installation Height
 Installation

4 ~ 10m
 PT Ø 60-76mm

Material
 Finish
 Colours
 Ingress Protection
 Wind Area (EPA)

High pressure die cast aluminium (Housing)
 Polyester powder coat cured under heat
 Light grey (RAL 7035), other RAL colours available on request
 IP66
 0.029m²

